

HOLE 1 110 YDS



WASHBOARD

A short and sweet start, this hole will give the golfer a glimpse of things to come later in the round, including a hint of punchbowl and the rolling hills and swales that characterize the forthcoming fairways and greens.

Although one of the smaller greens on the course, getting it close here will require some precision as the putting surface is divided into five distinct zones separated by strong rolls. Finding the right zone will be key to starting your round off with a par or better.

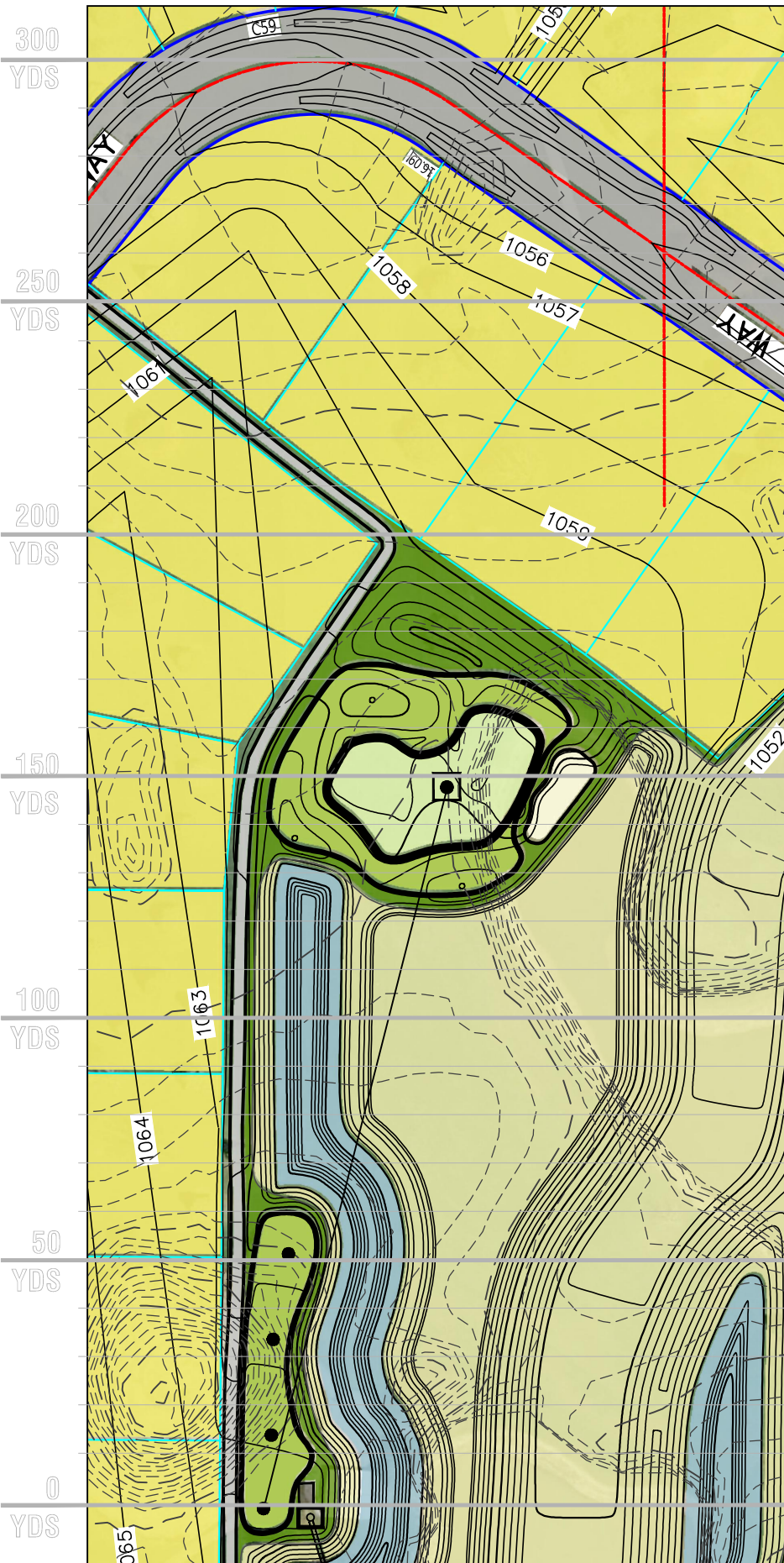
Inspiration(s):



PIIONEER POINTE



HOLE 2 153 YDS



DOUBLE WHAMMY

At first glance, the biggest challenge on this mid-range hole appears to be the required carry over a lush wetland area, but that's just the start. The large green has been partitioned into two distinct plateaus left and right, separated by a central swale demanding distance control. Get it on the right plateau and birdie is very possible, miss and be faced with a challenging lag or up and down.

Inspiration(s):

11th National Golf Links
2nd Blue Mound



PIONEER POINTE



HOLE 3 175 YDS



TAKE IT TO THE BANK

Based on the principals of the famed Redan template (in reverse), this hole features a large green angled from left to right and sloping from front to back along the wetland swale. The sucker play here is to go for the pin, while the smart play is to use the broad mound at the front left of the green which sits at a 45-deg angle and is intended for use as a banking slope to funnel shots to the middle and back of the green. The mound also provides protection from the public path that runs behind this hole.

Inspiration(s):

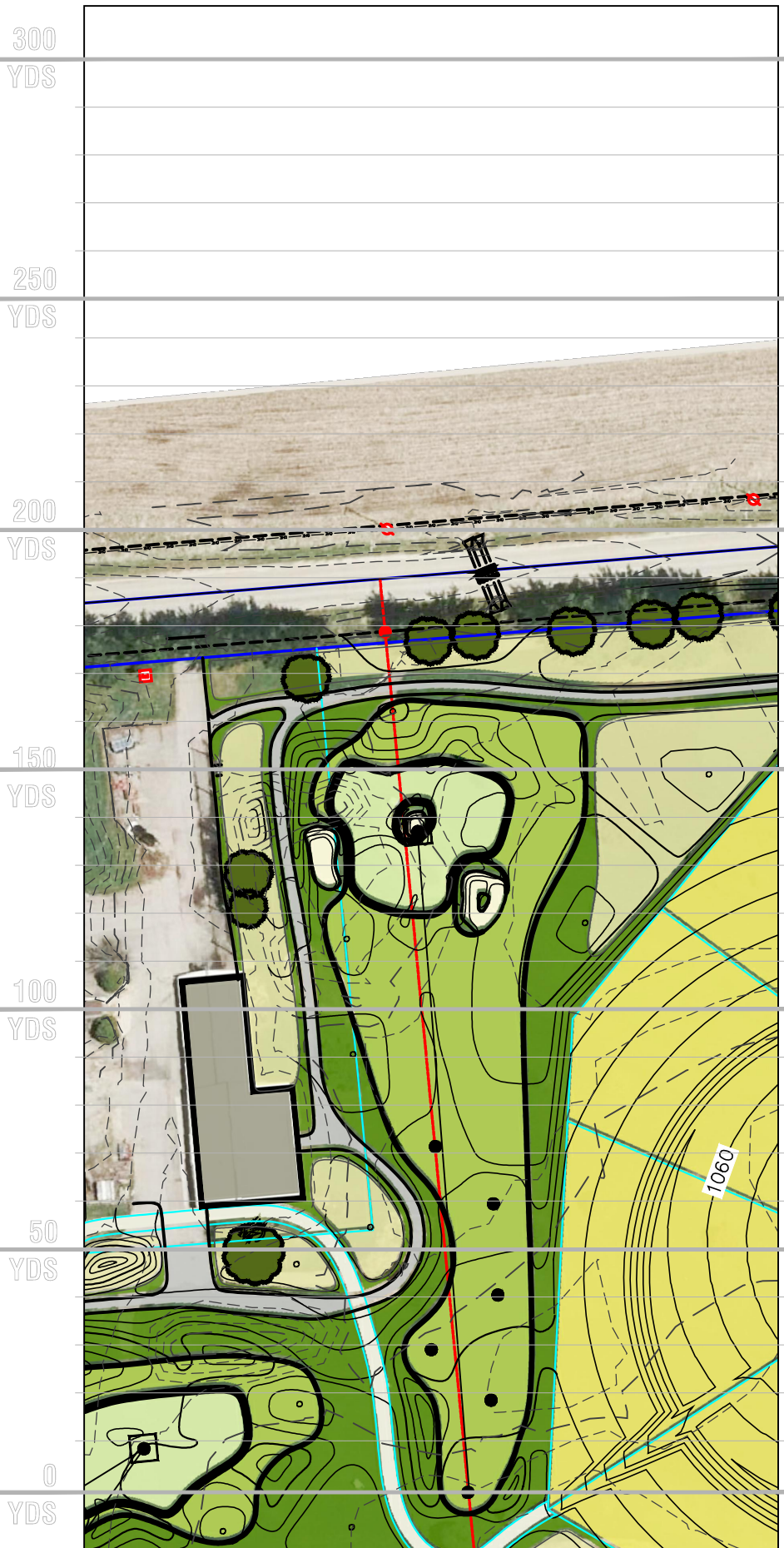
- 15th North Berwick (original)
- 7th Chicago Golf Club
- 4th National Golf Links



**PIONEER
POINTE**



HOLE 4 | 141 YDS



SAND CENTRAL

The center of attention here is pretty obvious... the small bunker sitting directly in the middle of the green divides it into three distinct lobes requiring a controlled approach or crafty use of the greens inner rolls to steer a ball close. Trouble lurks deep and along the sides as well, making this relatively short hole a tester from any angle.

Inspiration(s):
6th Riviera



**PIONEER
POINTE**



HOLE 5 133 YDS



BOOMERANG

With a long, narrow green, this hole can play as short as 120 or be stretched to over 150. Position is key to scoring here, as anything placed on the front of the green when the pin is back (or vice versa) will require a serpentine putt using the green's inner rolls to lag it close. The skilled player might also consider using the exterior mounding to bank their way to a tucked pin location.

Inspiration(s):

7th Crystal Downs



PIONEER POINTE



HOLE 6 120 YDS



THE LION KING

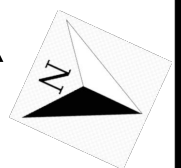
Perched atop the hill and wrapped around a deep fronting bunker, the green on this short hole can be attacked in a couple of ways. Play long and use the back and right banking slopes to direct a ball onto the green, or simply pick your distance and hope you've factored in the uphill and prevailing wind correctly, as those who leave it short must fight their way out of the deep lion's mouth bunker.

Inspiration(s):

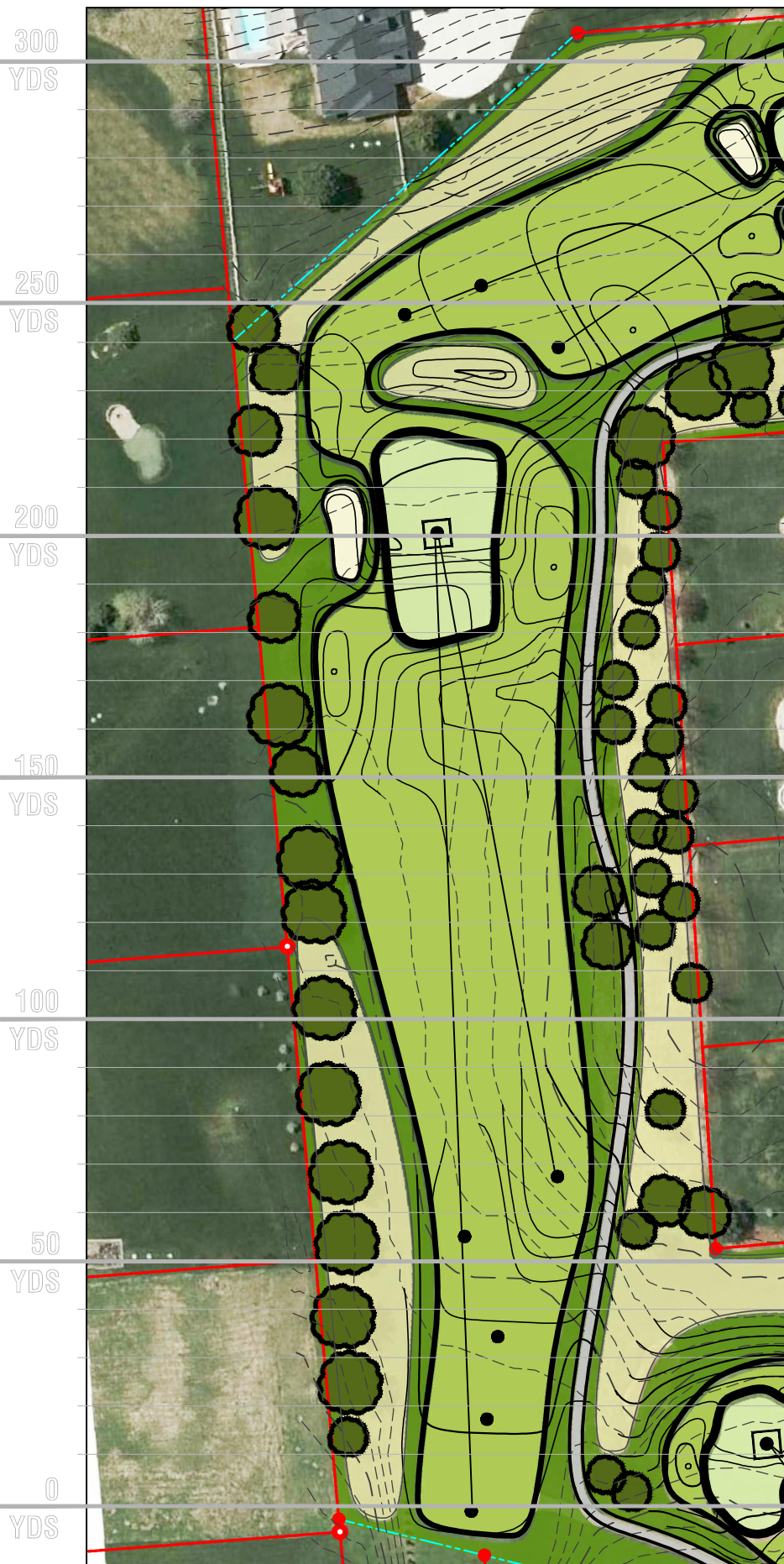
8th Sand Hills
16th CC of Charleston



PIONEER POINTE



HOLE 7 200 YDS



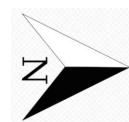
PUTTIN' ON THE RITZ

Based on the famed Biarritz template, this long hole features a long green with two plateaus bisected by a deep swale. The front plateau is grassed as fairway and sits at an elevation that allows view of the back plateau but hides the swale and creates the illusion that the green sits closer than it actually does. Both the swale and back plateau are pinnable. Trusting the yardage will be key to scoring here.

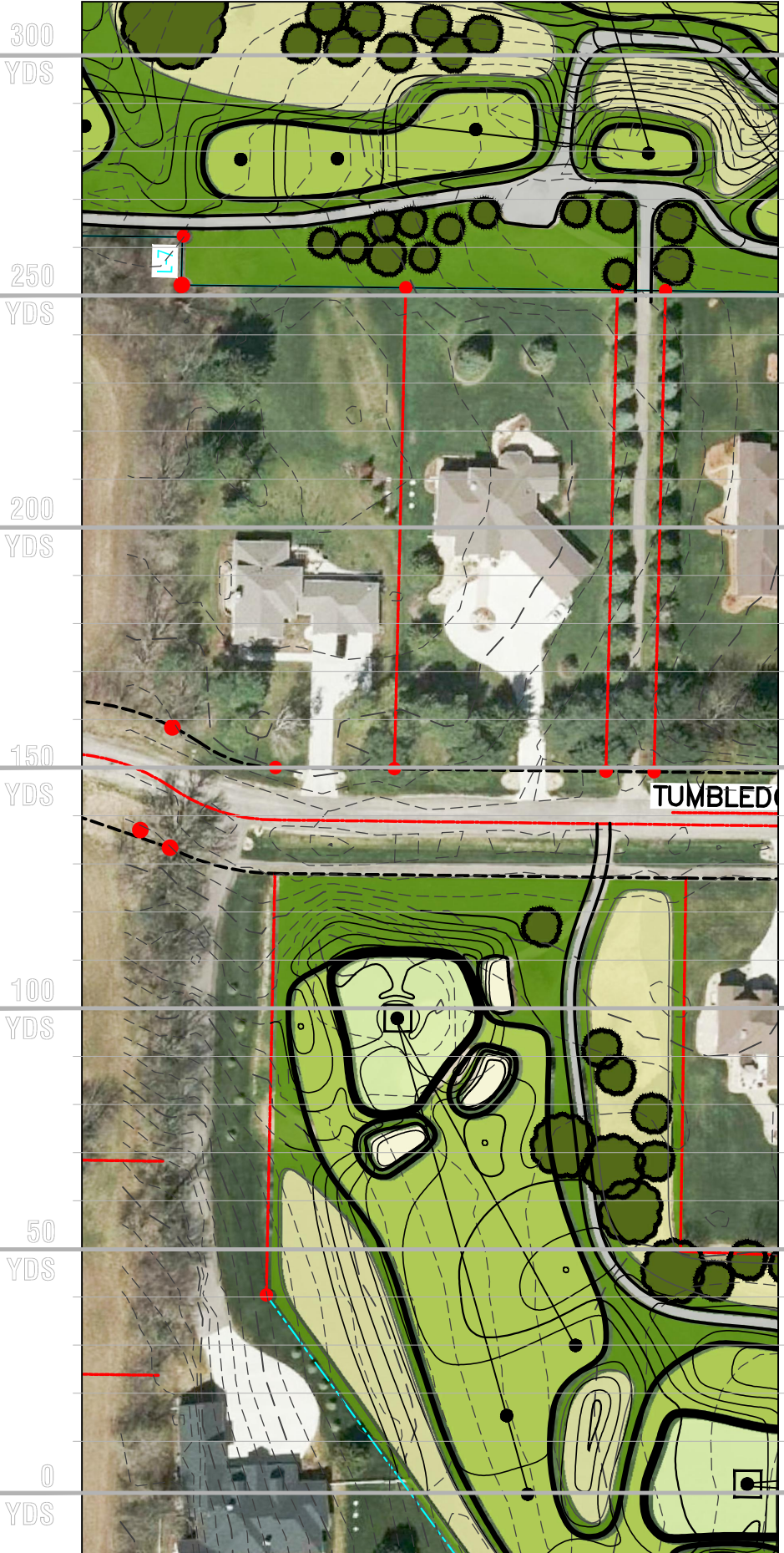
Inspiration(s):
13th Mid Ocean Club
3rd Blue Mound



**PIONEER
POINTE**



HOLE 8 95 YDS



SHORT STUFF

Playing less than 100 yards, this shorty can be an easy birdie or a very tough par. The large, undulating green, while relatively easy to hit, is guarded by internal contours including a "thumb print" hollow, which means finding the right quadrant of the green is critical as pins can be tucked in, around and behind a number of fun swales and ridges.

Inspiration(s):
11th Pelham CC
6th National Golf Links



**PIONEER
POINTE**



HOLE 9 | 113 YDS



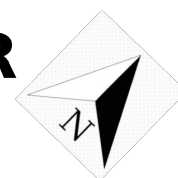
STONES THROW

Perched along the edge of the steep banked storm swale, this downhill hole (10'-15' depending on tee) is inspired by the famed 7th at Pebble Beach. With the smallest green on the course, this hole is protected on three sides by bunkers and a steep hill, so accuracy is key here, though any ball dropped on the slope short left of the green is likely to also end up on the dance floor.

Inspiration(s):
7th Pebble Beach



**PIONEER
POINTE**



HOLE 10 150/190/225 YDS



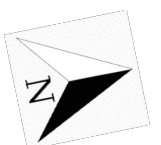
PUNCH DRUNK

Shaped like a giant crater, this hole features a punchbowl design with high sides along 3/4s of the green perimeter that funnel shots inward. The large mound at front left obscures partial vision of the putting surface, creating some excitement as players wait to learn the fate of their tee shot. The green itself is large with multiple rolls and tiers for putting interest. This hole can also play from a multitude of distances and angle depending on wind conditions and setup needs.

Inspiration(s):
17th Sand Valley
5th Mannings Heath



PIONEER POINTE



1:100

HOLE 12 275 YDS



ROADKILL

Played to a par 3.5, this is the longest hole on the course at 275 yds. Inspired by the famed Road Hole (17) at St Andrews and its many replications, the brave will want to attack down the right side playing over or near the bunker while avoiding a plunge down the steep hill. Successful navigation will provide the best angle into this long, canted green.

For the more timid, plenty of open fairway is provided along the left, but this angle requires an uphill approach over the small greenside bunker to a shallow green, with more sand and hill lurking behind.

Position is key here to avoid being the next Roadkill!

Inspiration(s):
17th St. Andrews
10th Shoreacres



**PIONEER
POINTE**



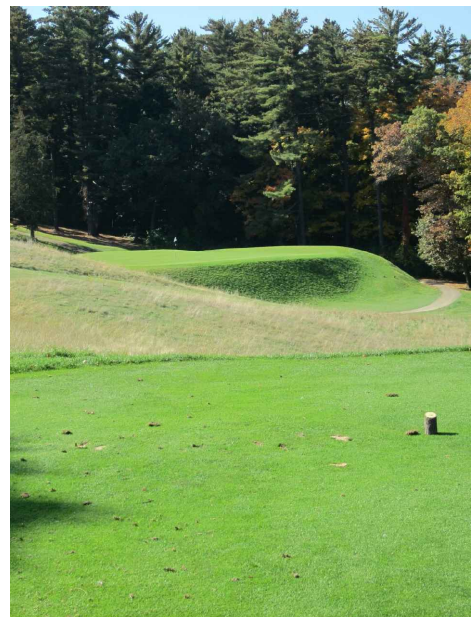
HOLE 12 185 YDS



ON POINTE

Playing from the highest point(e) on the course, this downhill is inspired by the 7th "Boxcar" hole at Lawonia Links, featuring a large undulating putting surface with steep dropoffs at the back and right of the green. The best play here is to drop a ball short left of the green and use the existing hillside to funnel shots on. Otherwise the aggressive can try to find the right yardage while contending with the prevailing crosswind and a 40' drop tee to green.

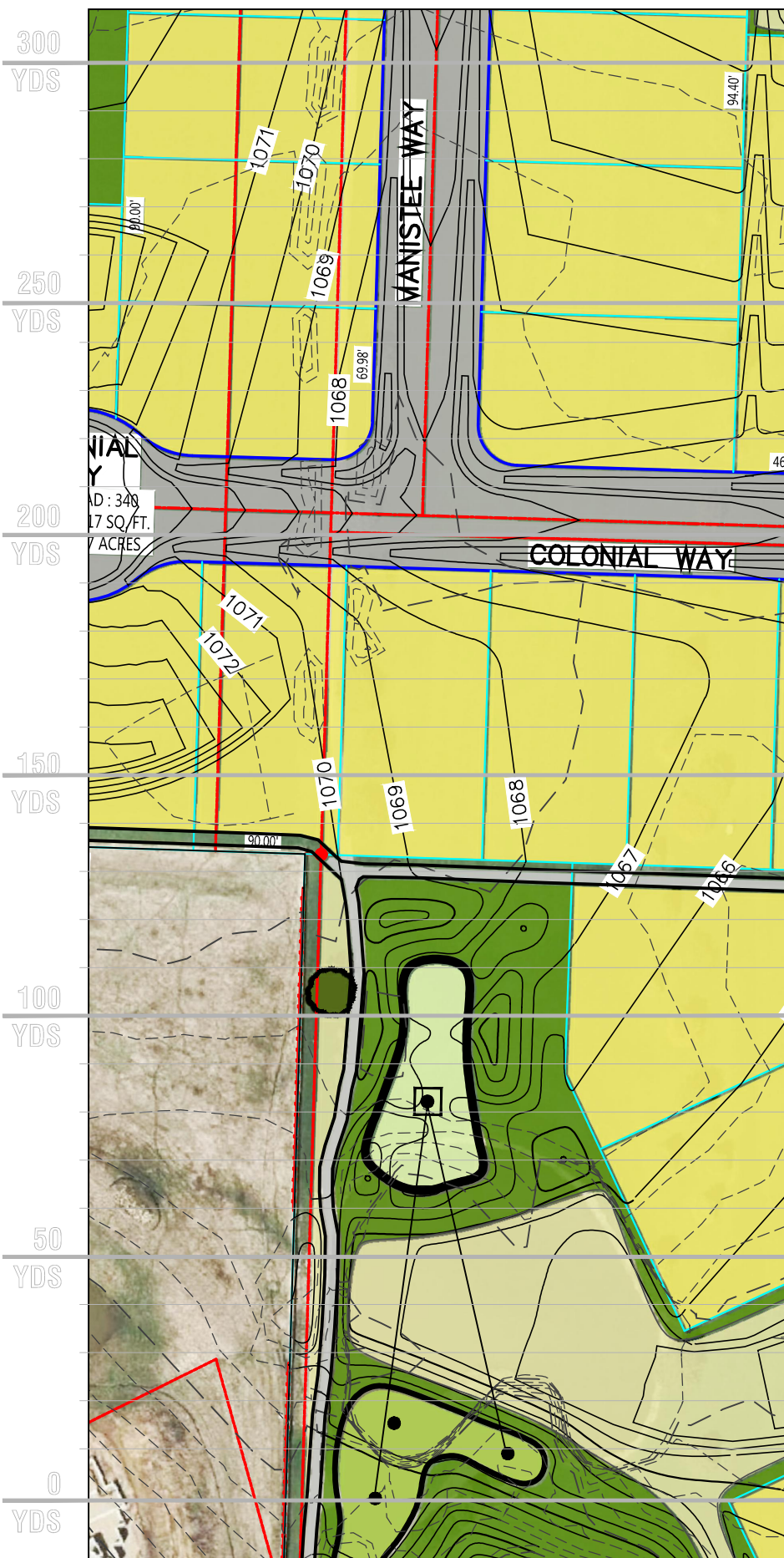
Inspiration(s):
7th Lawsonia



**PIONEER
POINTE**



HOLE 12.5 85 YDS



GAMBLING MAN

Conceived as a "bonus hole," this shorty can be setup to play in a variety of ways, including as a pitch and putt hole or simply a long putting challenge. From the tees on the south side of the swale, the hole is meant to be played to the front half of the green at about 85 yards, par 3. Alternatively, the hole can be played as a 125' putting challenge with the tee markers placed at the green's front edge and playing to a back pin location, par 2.

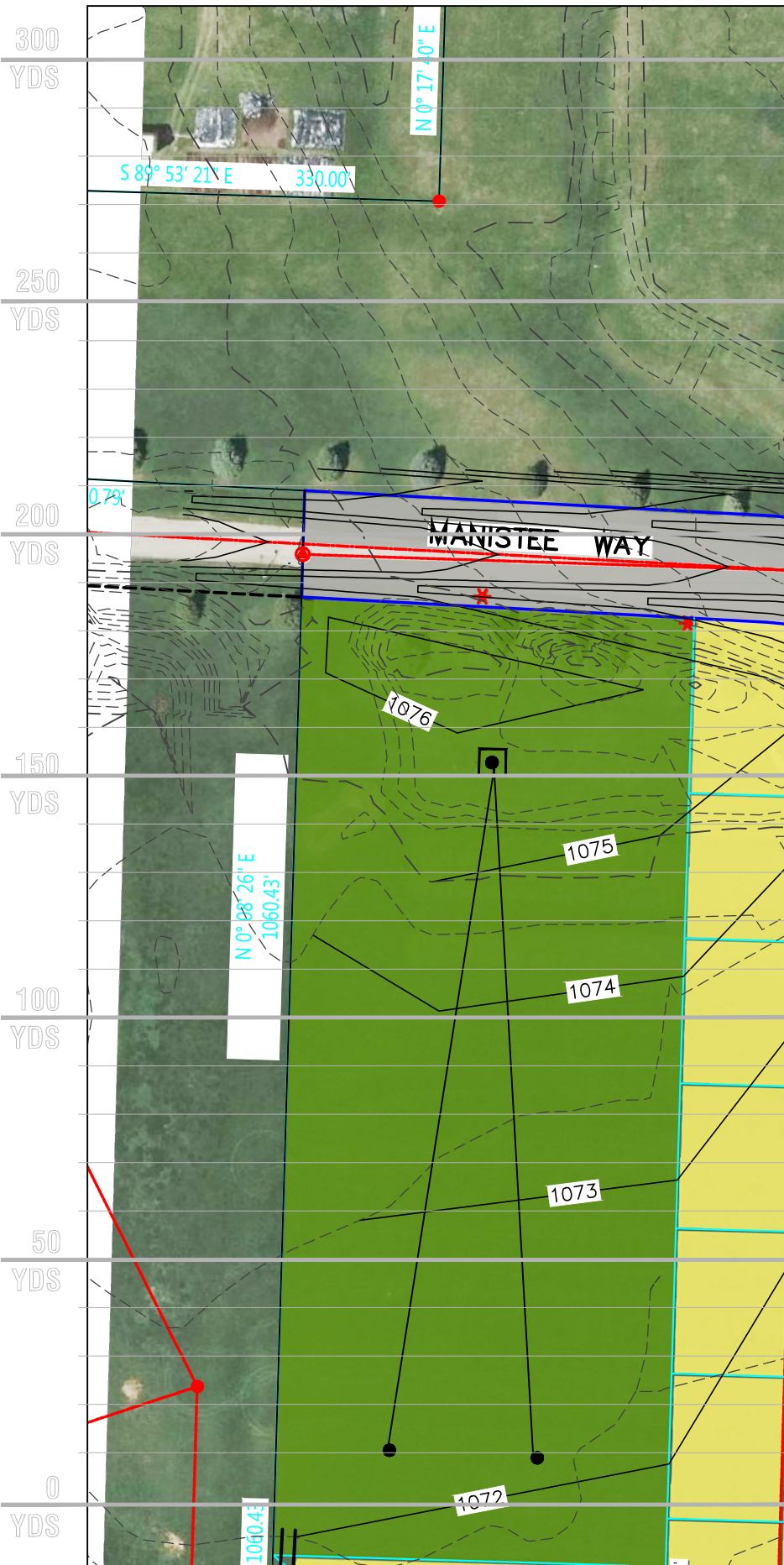
(*The hole can also be omitted from the routing and used as a nursery when necessary)

Inspiration(s):
17th Mountain Shadows

PIONEER POINTE



HOLE 13 160 YDS



KELLY'S KORNER

In progress

Inspiration(s):
Jerry Kelly??

PIONEER POINTE

